



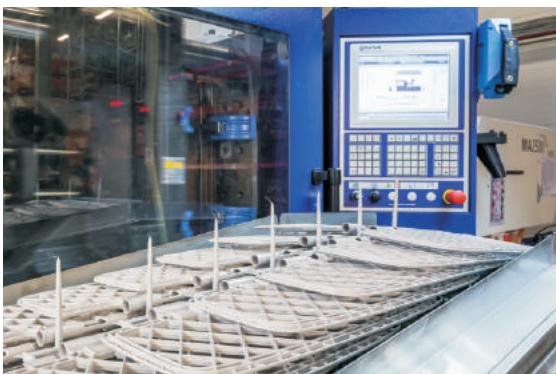
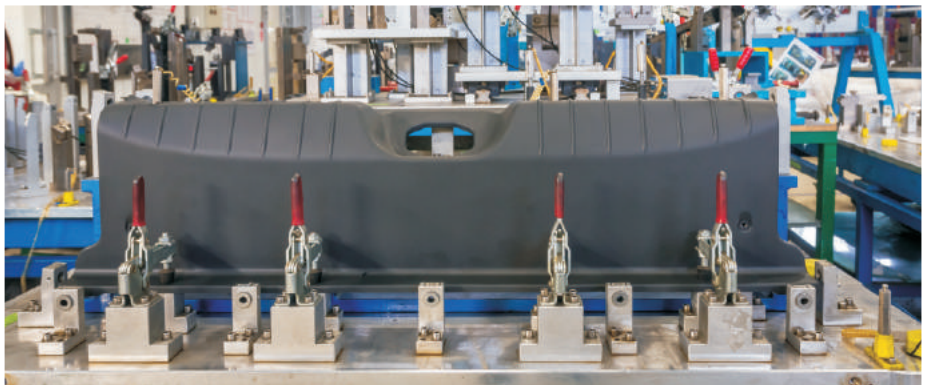
The Production of the exterior and interior parts for the vehicles



Closed Joint Stock Company

“TECHNO-POLYMER”

The Production of wood-filled polypropylene sheet Kodrenalen®



BUSINESS PRESENTATION ABOUT THE COMPANY

WWW.SATURNO-TP.COM

## ABOUT THE COMPANY

**CJSC «Techno-Polymer»** was founded in 2001. In 2008, CJSC «Techno-Polymer» established **JSC «Saturno-TP»**.

**The establishment of JSC «Saturno-TP»** was carried out in cooperation with Saturno S.p.a. Turin, Italy with the objective of adoption of technologies and know-how of development and production of exterior and interior parts accumulated by Saturno S.p.a. during their 50 years' experience in the automotive industry.

**Today CJSC «Techno-Polymer» and JSC «Saturno-TP»** constitute a group of companies, where CJSC «Techno-Polymer» is a manufacturer of wood-filled polypropylene sheets Kodrenalen® and JSC «Saturno-TP» is a manufacturer of the exterior and interior parts for the vehicles of different ranges including sunvisors, door trims, parcel shelves, side trims, pillar trims, covers and other parts produced by injection molding and by thermoforming Kodrenalen® sheets.

**JSC «Saturno-TP»** is one of the leading Suppliers of automotive components, operating in full compliance with ISO/TS 16949 requirements, QSB standards (special requirements of GM-AVTOVAZ) and ASES (evaluation procedure of alliance Renault-Nissan), as well as ISO 14001-2004 (the system of economic management).

■ Confidence in certified quality performance



■ Engineering of new parts is implemented in cooperation with the Italian design company OXI S.r.l. (Turin, Italy) - [www.oxisrl.it](http://www.oxisrl.it)

■ Our principal customers: Renault-Nissan-AVTOVAZ, GM-AVTOVAZ, Avtoframos, GAZ, MAZ, SOLERS, Faurecia and others.



## GENERAL INFORMATION

Location: Togliatti, Russia, site of PJSC «KuybyshevAzot»

Authorized capital: RUR 27,5 million

Companies annual turnover: RUR 550 million (2016 estimate)

Property: Land plot: 1,6 ha; **Production shop 1:** 1 800 sq.m. (Production of wood-filled polypropylene sheets Kodrenalen®); **Production shop 2:** 3 300 sq.m. (Thermoforming); **Production shop 3:** 4 200 sq.m. (Injection molding, sun visor production). All equipment corresponds to European standards.

### JSC SATURNO-TP PERSONNEL: 200 EMPLOYEES:



## CURRENT PROJECTS

**Door Trims Front/Rear** - Chevrolet NIVA (GM-AVTOVAZ);

**Tailgate Trims** - Chevrolet NIVA (GM-AVTOVAZ), Datsun Mi-Do (Nissan);

**Parcel shelves** - Chevrolet NIVA (GM-AVTOVAZ), LADA GRANTA and LADA KALINA 2nd Generation (AVTOVAZ), Renault Duster ph.2, Datsun Mi-Do(Nissan);

**Side shelf supports** - LADA GRANTA and LADA KALINA 2nd Generation (AVTOVAZ), Renault Duster ph.2;

**Sun Visors** - LADA VESTA, LADA GRANTA, LADA KALINA 2nd Generation, Renault Logan, Nissan Almera, Datsun On-Do, Datsun Mi-Do (Nissan);

**Pillar Trims A,B,C,D** - LADA LARGUS family , LADA VESTA (AVTOVAZ);

**Exterior parts for Datsun (Nissan).**

## ACQUIRED PROJECTS

### (DEVELOPMENT AND/OR PRODUCTION PREPARATION)

**Door Trims** - Chevrolet NIVA New Generation;

**Interior parts** - LADA VESTA Station Wagon;

**Sun Visors** - Nissan X-trail;

**Luggage Floor Front/Rear** - Nissan X-trail;

**Parcel shelves** - Renault Duster ph.3.

## EQUIPMENT AND TECHNICAL PROCESSES



### ■ WOODSTOCK SHEET PRODUCTION

Woodstock sheets are produced on extrusion line Icma San Giorgio, capacity 1200 kg/h.



### ■ THERMOFORMING

Door trims and parcel shelves (including blow-molding technology) are produced on thermoforming lines equipped with Vilmar presses with clamping force up to 250 tons.



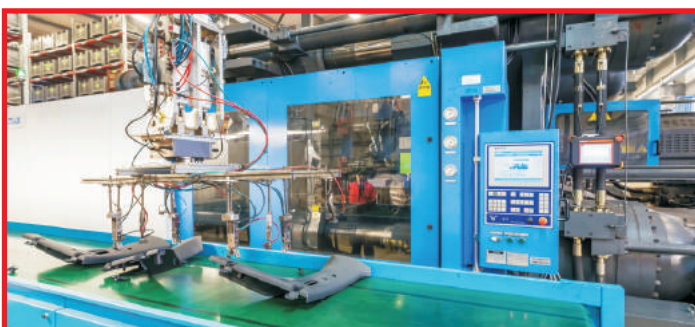
### ■ PATTERN CUTTING & BLANKING

Pattern Cutting and Blanking are executed on hydraulic notching presses F.ILLISACCOS.N.C.



### ■ SUN VISOR WELDING AND ASSEMBLY

Sun visors welding and assembly are performed on high frequency welding machines G.E.A.F.



### ■ INJECTION MOLDING

Injection molding is executed on the injection molding machines HAITIAN, Jupiter and Mars types with clamping force from 120 up to 1800 tons.





## COMPONENTS & TECHNOLOGIES

### Door Trims:

- Thermoforming: Kodrenalen<sup>®</sup> + PVC film/fabric;
- Injection Molding;
- Multi-component trims: Kodrenalen<sup>®</sup> (thermoforming) + PVC film/fabric + molded parts = assembly / ultrasonic welding

### Luggage side trims:

- Thermoforming: Kodrenalen<sup>®</sup> + needle felt fabric;

### Parcel shelves:

- Thermoforming: Kodrenalen<sup>®</sup> + needle felt fabric/cloth;
- Thermoforming: Kodrenalen<sup>®</sup> with blowing + needle felt fabric / cloth.

### Luggage floor:

- Thermoforming Kodrenalen<sup>®</sup> with blowing + needle felt fabric.

### Tailgates:

- Thermoforming: Kodrenalen<sup>®</sup> + PVC film/fabric;
- Injection molding.

### Sun visors:

- Twin shell technology;
- Sandwich technology.

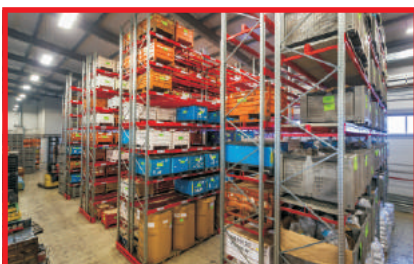
### Other technologies:

- Patent-protected technology of Kodrenalen<sup>®</sup> production - wood-filled polypropylene sheet also known as Woodstock and Polywood;
- High-frequency welding;
- Ultrasonic welding;
- Vibration Welding;
- Image Thermotransfer.

### Other interior parts manufactured by injection molding:

- Pillar trims A, B, C, D;
- Trims, covers, housings, etc;
- Wheel arch trims.

- Address warehousing of raw materials, components and finished products;
- Special checking fixtures for quality control;
- Storage and repair of production tools.





THE EXAMPLES OF FINISHED PRODUCTS AND COMPONENTS





[WWW.SATURNO-TP.COM](http://WWW.SATURNO-TP.COM)

**JSC «Saturno-TP»**

Tel/fax: +7 (8482) 566-178  
e-mail: [info@saturno-tp.com](mailto:info@saturno-tp.com)

445007, Novozavodskaya st. 6  
Samara Region, Togliatti, Russia

**CJSC «Techno-Polymer»**

Tel/fax: +7 (8482) 566-142  
e-mail: [info@techno-polymer.ru](mailto:info@techno-polymer.ru)